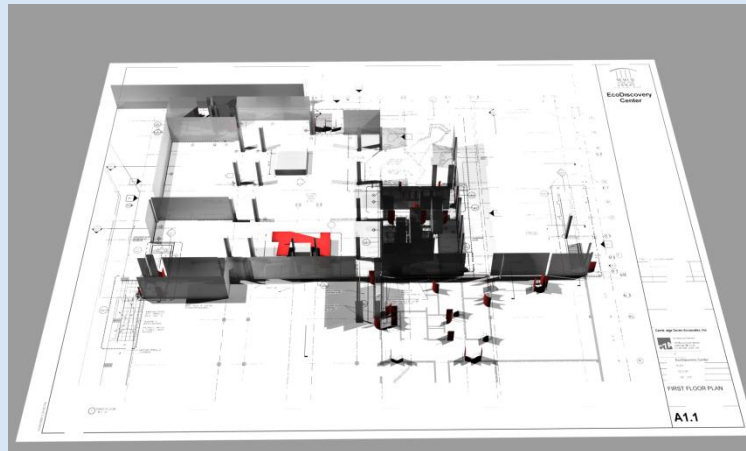
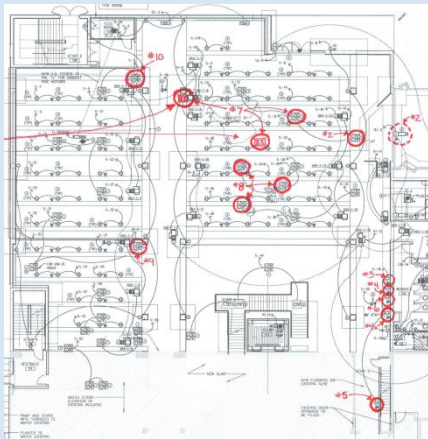


Water's Journey through the Everglades



Water's Journey through the Everglades

Project paralleled a facility expansion



Water's Journey through the Everglades

Extend depth and breadth of experience

HURRICANE AFTERMATH

STORM SIZE



STORM CATEGORY

Category 4 (131 - 155 mph wind speed)

FLOOD LEVEL

Terrain may be flooded well inland

OVERALL DAMAGE

More extensive curtain wall failures with some complete roof structure failure on small residences. Major erosion of beach areas. Terrain may flood well inland.

LIVE VIEW



MOBILE HOME



Mobile homes are pre-built and are transported to a location you either rent or purchase. One in three homes in Florida is a mobile home.

GABLE ROOF



A gable is the triangular part of a wall between the edges of a sloping roof. The shape of the gable depends on the height of the roof.

SHATTER RESISTANT WINDOWS



Shatter resistant windows have a vinyl layer in between two glass panes, designed to prevent the glass from breaking into pieces when shattered.

GARAGE BRACES



NOT AVAILABLE

Garage Braces keep the door from being sucked out or blown in from the force of hurricane winds.

PLYWOOD



DID NOT BUY

Plywood is the most affordable method of window protection but very often it is not installed properly and can fail in the more intense storms.

GENERATOR



BLEW AWAY

Your power could be out for 4-6 weeks, so a Generator would come in handy. Remember to only use it outdoors!

GASOLINE



BLEW AWAY

Gasoline is needed to run the generator.

BATTERIES



DID NOT BUY

Batteries are needed for things like flashlights and portable radios.

WATER



BLEW AWAY

You should have a minimum of one gallon per person per day for at least three days. Make sure you have enough for your pets also!

TAPE

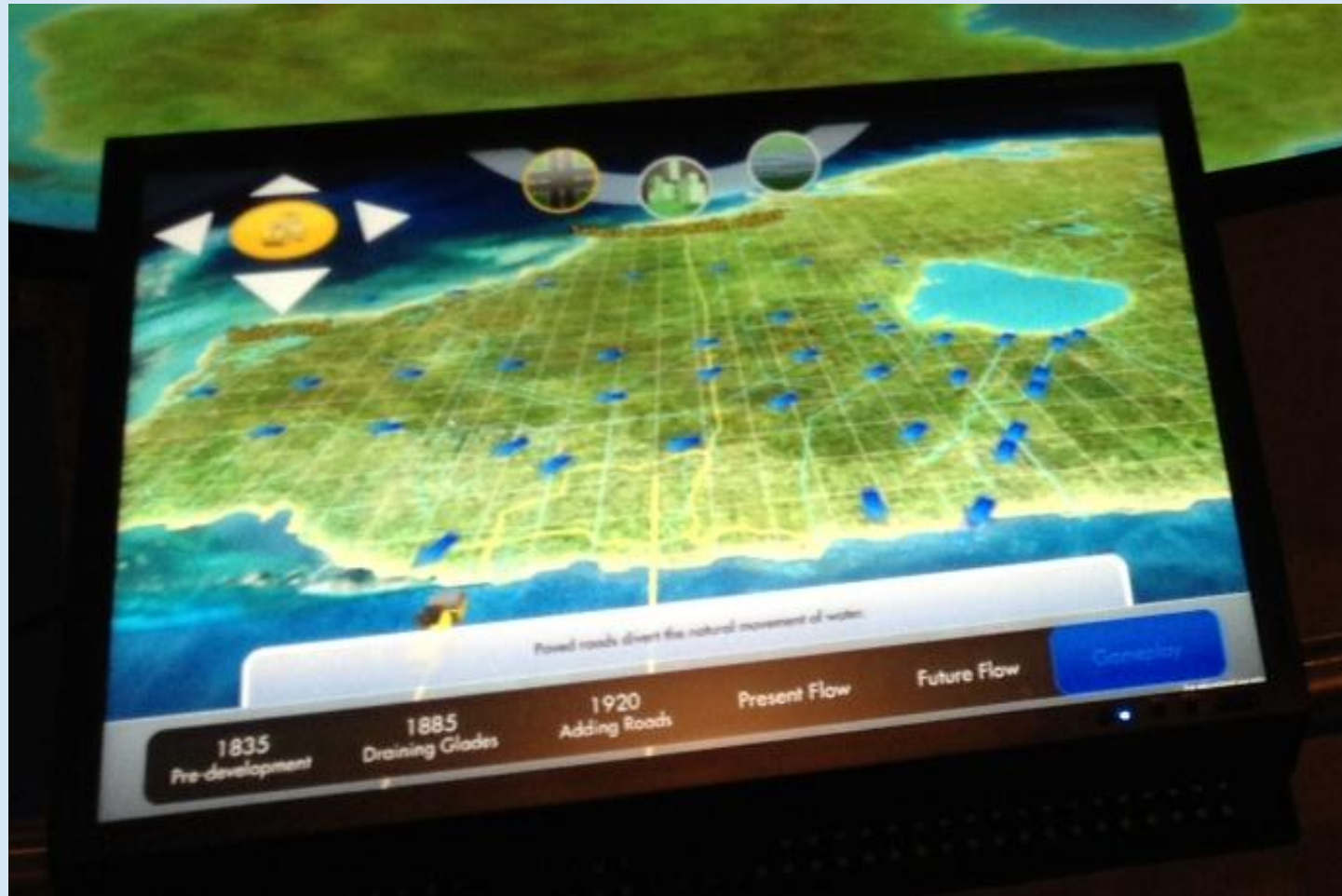


BOUGHT

Tape does nothing to help protect your windows during a hurricane.

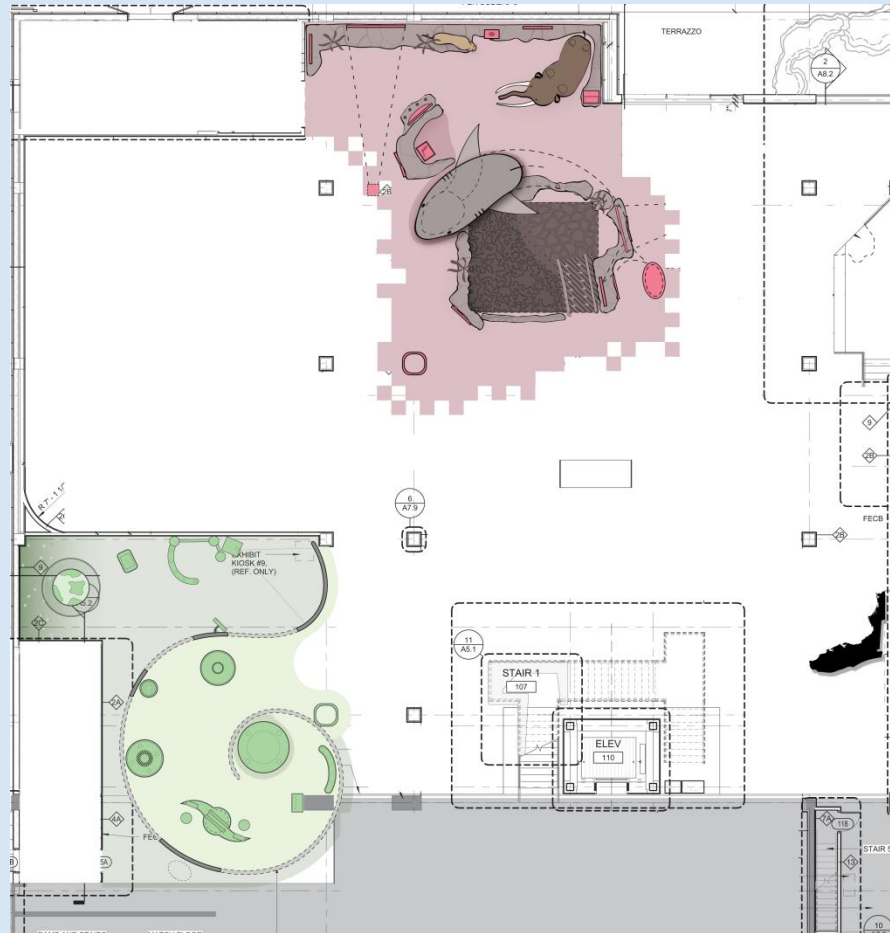
Water's Journey through the Everglades

Play as a simulation of life



Water's Journey through the Everglades

Distributed rather than co-located



Water's Journey through the Everglades

Project Impacts

- Adolescents will gain an greater awareness of how water impacts the environment, from the local to the global.
- Adolescents will gain a clearer understanding of the time scales and scope of environmental change.
- Adolescents' confidence level in their ability to understand the relevance of science will rise as they explore the vast scientific data that have been collected, and answer their own questions about water.



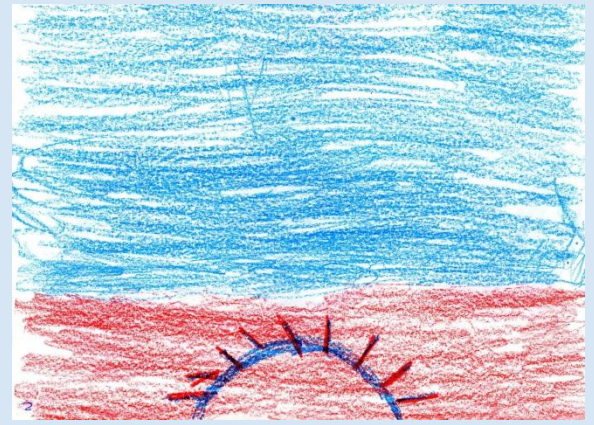
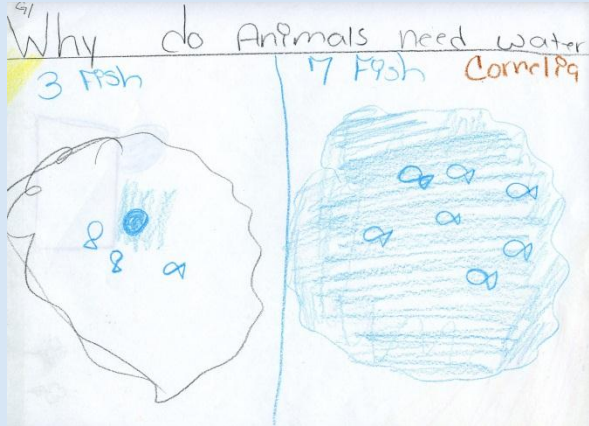
Water's Journey through the Everglades

Summative evaluation begins this Friday!



Water's Journey through the Everglades

Front-end Testing



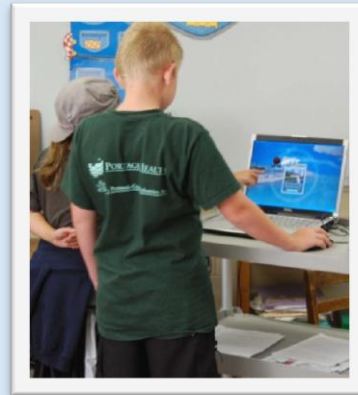
Water's Journey through the Everglades

Formative testing at MTU



Water's Journey through the Everglades

Formative testing at MTU



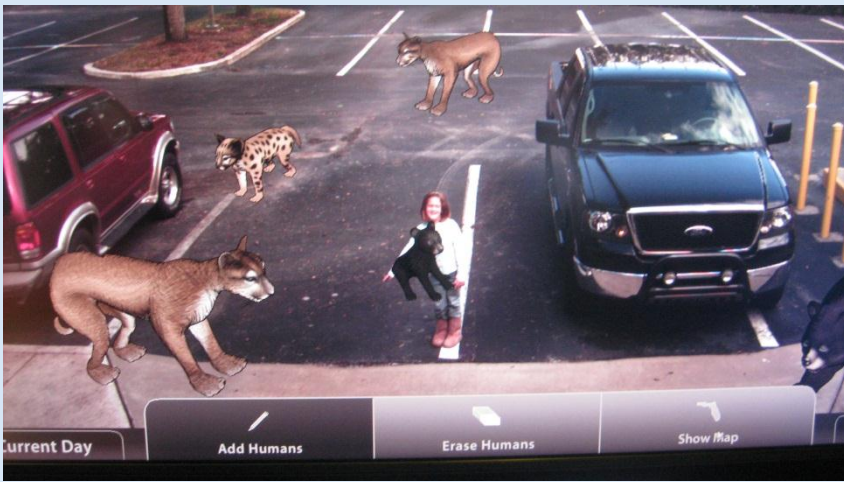
Water's Journey through the Everglades

Family prototype testing



Water's Journey through the Everglades

Family prototype testing



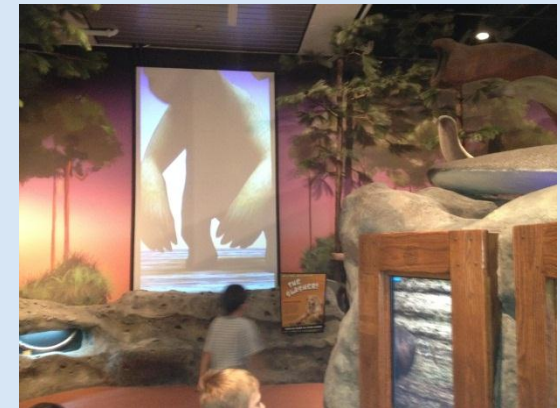
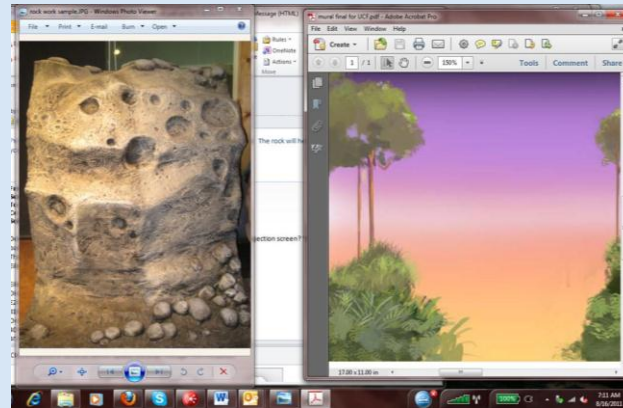
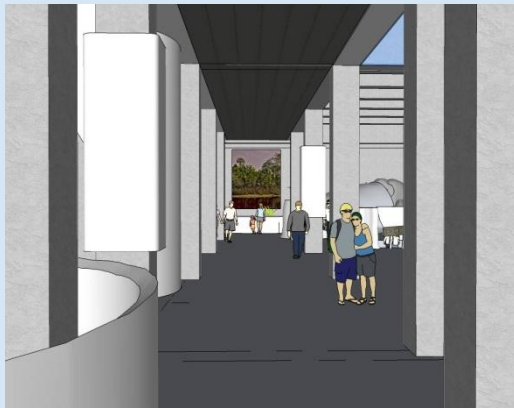
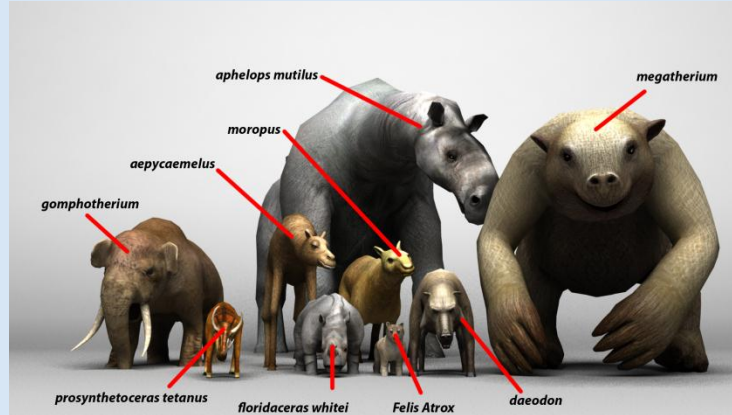
Water's Journey through the Everglades

Collaborative Design



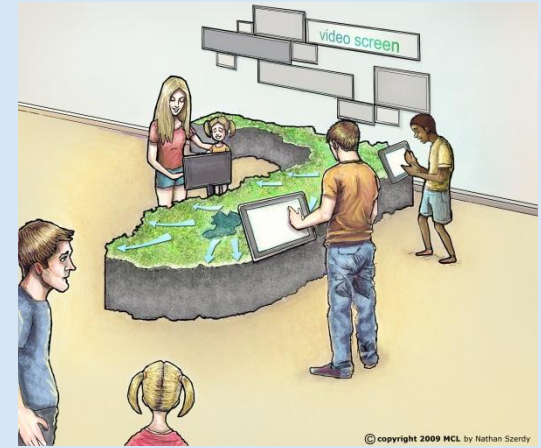
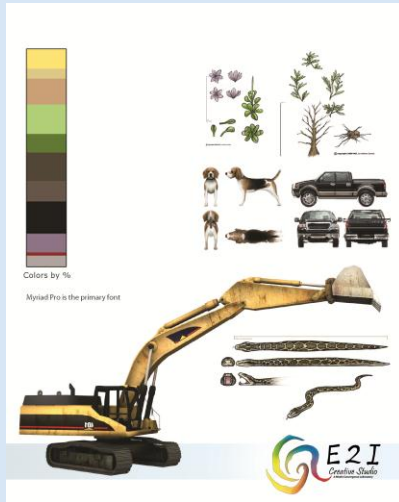
Water's Journey through the Everglades

Collaborative brainstorming



Water's Journey through the Everglades

Iterative Development



Water's Journey through the Everglades

Linkage to formal education

Motivational partner
Applied learning partner



Water's Journey through the Everglades

Challenges

Many more entities involved with facility expansion.

Keep the plans fluid.

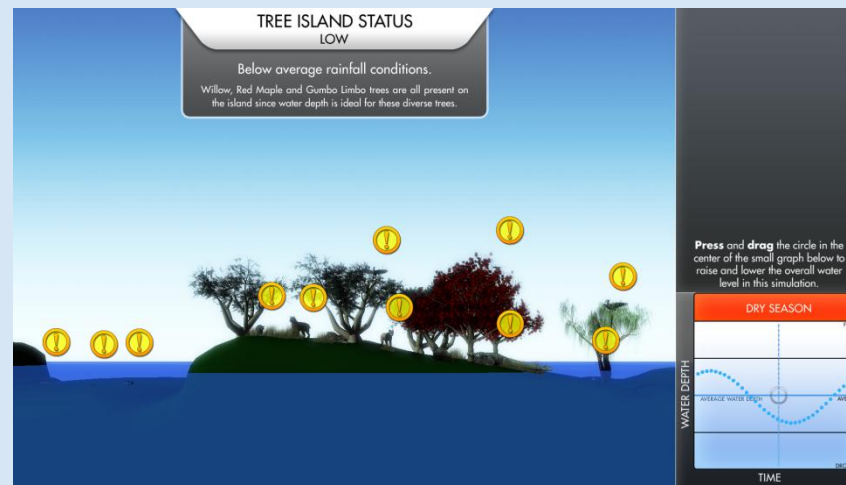


Water's Journey through the Everglades

Successes

Many more entities involved.

Keep the plans fluid.



Water's Journey through the Everglades

Extended lessons for the field

Engage the imagination.

Choose appropriate nimble technology.

Use it to let learners explore.

Change the current reality that the audience walks in knowing more about technology than most institutions.



Water's Journey through the Everglades

“I did this!!”

Thank you!

