

The Circuit: A Platform for Increasing Access to and Deepening Participation in Public Engagement in Science | AWARD #1906998

Community Partner: Lawrence Cooper (Alabama STEM Council)

PI: Dr. Martin Storksdieck (Center for Research on Lifelong STEM Learning at Oregon State University), Storksdieck@oregonstate.edu

Co-PIs: Darlene Cavalier (SciStarter), dar cav1@gmail.com | Dr. Joe E. Heimlich (COSI), JHeimlich@cosi.org

Project Website: <https://sciencenearme.org/>

Project Description

The Circuit aims to understand how people participate in opportunities across STEM domains through the development of a free online platform for science engagement.

Key Achievements

- We developed **Science Near Me**, a website that provides people with a searchable database of STEM opportunities from a wide variety of providers in one place.
- We developed **data dashboards** that provide STEM engagement providers and researchers with customized data insights about how the public engages with the opportunities displayed on the site.
- We learned how **valuable our beta partners were** in providing feedback about the challenges and opportunities within Science Near Me.

Audience & Settings

Audience: STEM opportunity providers, researchers, the public

Disciplinary area: Public engagement in science

Learning environment: Citizen science programs, museums, science festivals, OST programs, public forums, astronomy clubs, science cafes, and more.

Access & Inclusion

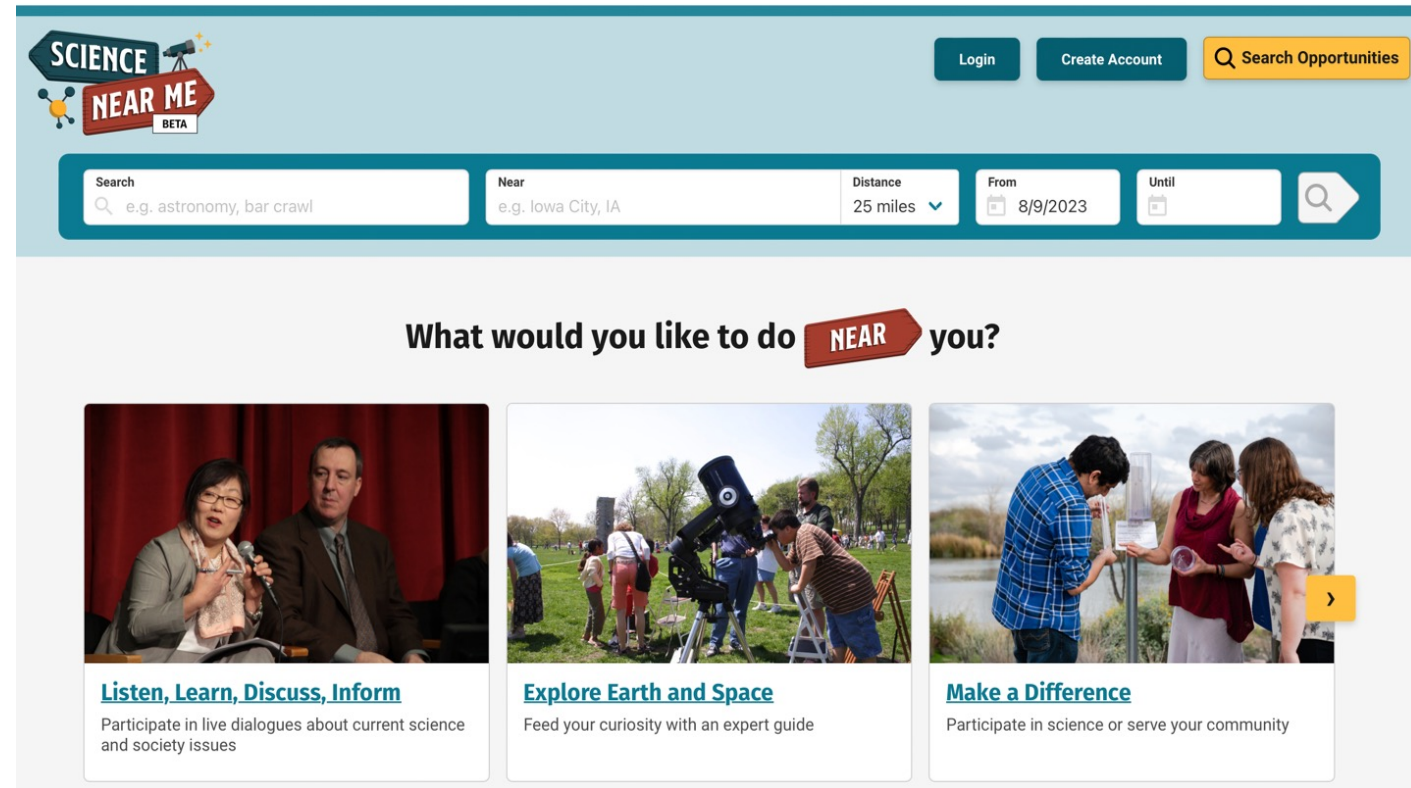
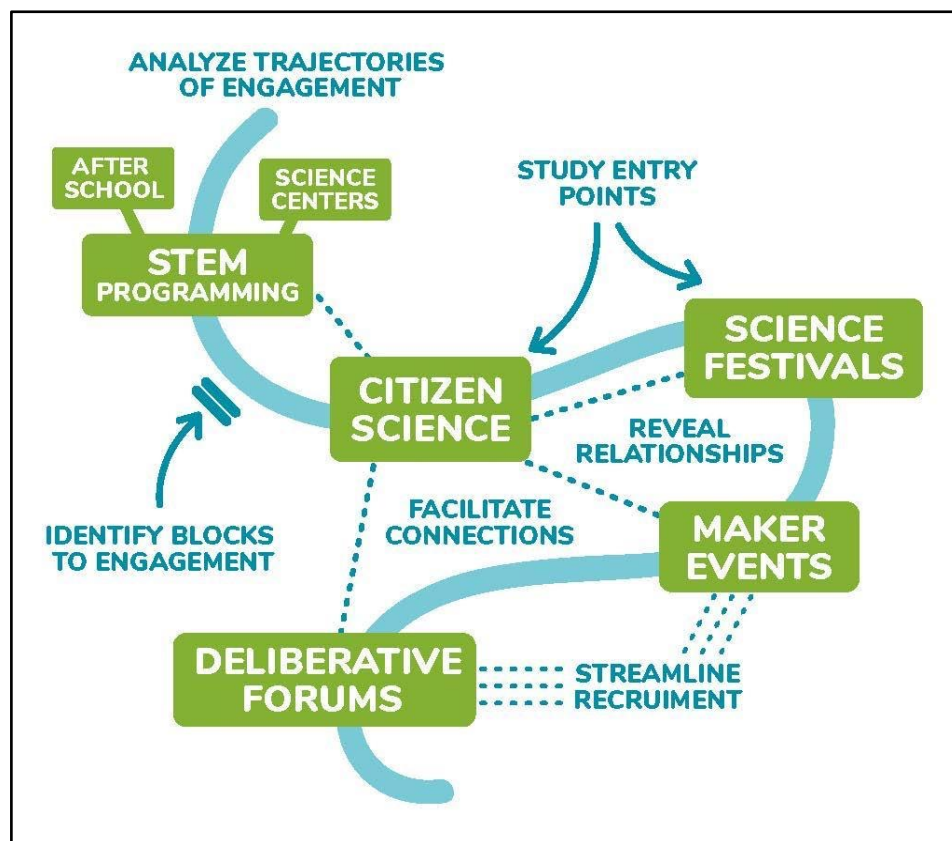
By better understanding the landscape of opportunities to engage, Science Near Me aims to surface and address gaps and barriers to participating in STEM.



This material is based upon work supported by the National Science Foundation under grant [2229061](#). Any opinions, findings, and conclusions or recommendations expressed in this material are those of the author(s) and do not necessarily reflect the views of the National Science Foundation.

The Circuit: A Platform for Increasing Access to and Deepening Participation in Public Engagement in Science | AWARD #1906998

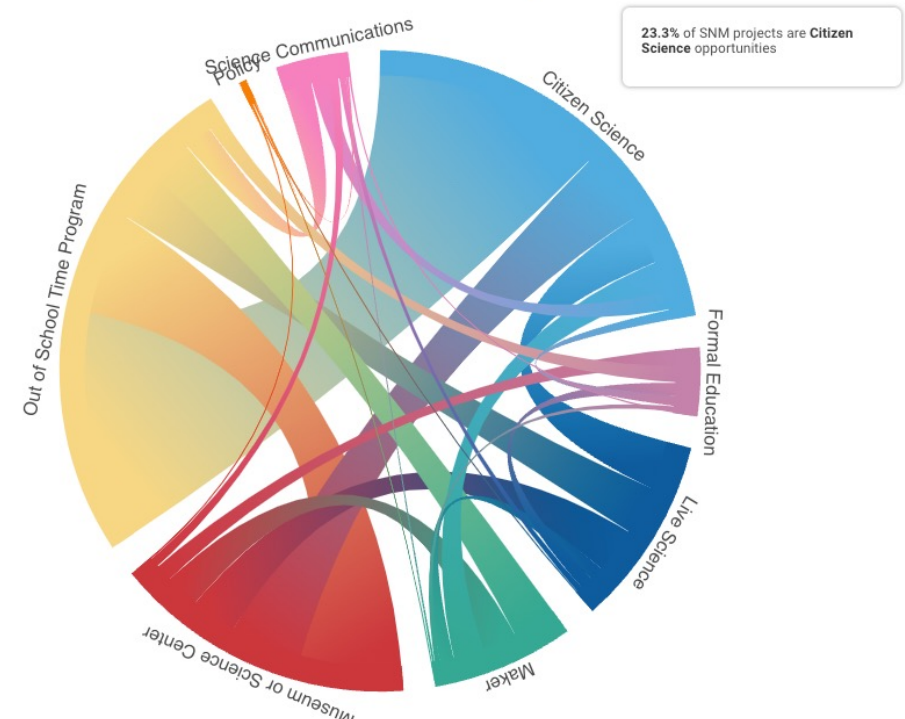
The Concept of the Science Near Me Platform



Science Near Me Beta Site

Engagement Overlap

This chart describes the amount of times users visit Science Near Me opportunities across science domains.



Learn more at:
<https://sciencenearme.org/>

Domain Insights from Data Dashboard