

Exploratory research and co-design to identify opportunities to support caregiver engagement in early STEM learning | AWARD # 2215353

PIs: Suzy Letourneau (New York Hall of Science),
sletourneau@nysci.org

Co-PIs & Community partners:

Delia Meza (New York Hall of Science), dmeza@nysci.org

Jasmine Maldonado (New York Hall of Science),

jmaldonado@nysci.org

Project Description

This Pilot and Feasibility project is building capacity for a long-term research practice partnership by bringing together researchers, museum educators, pre-K teachers, and caregivers to: 1) define family engagement in early STEM learning from caregivers' perspectives, and 2) identify opportunities for new family engagement initiatives that reflect caregivers' knowledge, practices, and priorities.

Key Achievements

- Used personas to collaboratively interpret data from interviews with 32 local caregivers
- Co-created a vision document defining our shared goals for family engagement in early STEAM learning
- Currently brainstorming and selecting new directions for family engagement initiatives

Audience & Settings

Audiences: Caregivers of young children, pre-k educators

Disciplinary area: Early childhood STEM learning, family/caregiver engagement

Learning environment: This project builds on a 30-year partnership between the New York Hall of Science and a public, STEAM-focused pre-K center located on the museum's campus.

Access and Inclusion

This project is working toward more culturally responsive family engagement practices by involving caregivers in co-designing new approaches. We are also exploring museums' roles as third spaces that can bridge home and school environments and strengthen STEM learning ecosystems for families with young children.

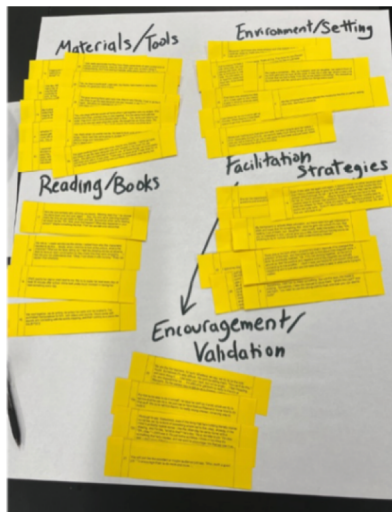


Exploratory research and co-design to identify opportunities to support caregiver engagement in early STEM learning | AWARD # 2215353

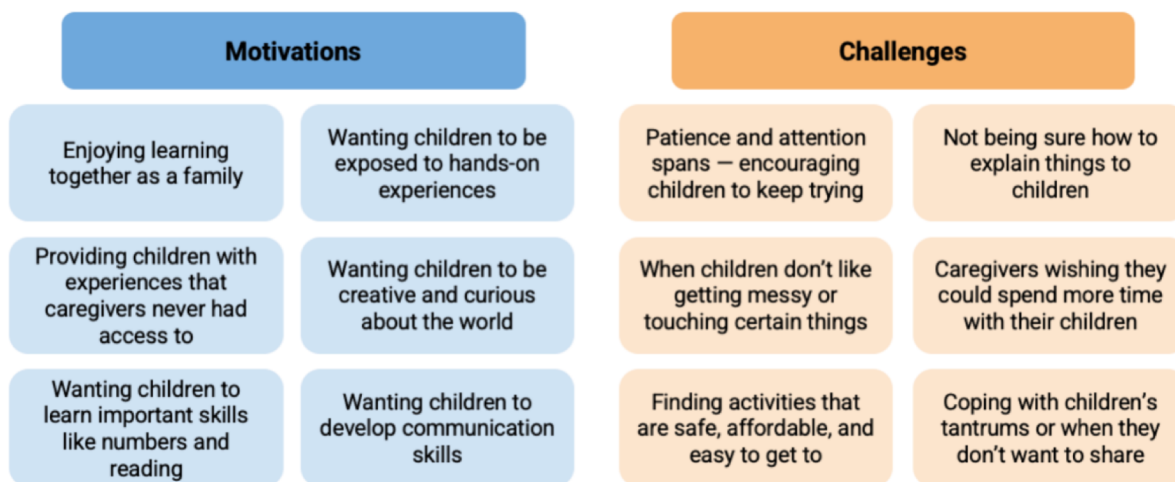
This material is based upon work supported by the National Science Foundation under grant [2229061](#). Any opinions, findings, and conclusions or recommendations expressed in this material are those of the author(s) and do not necessarily reflect the views of the National Science Foundation.



Sorting interview excerpts



Sample themes generated by the co-design group



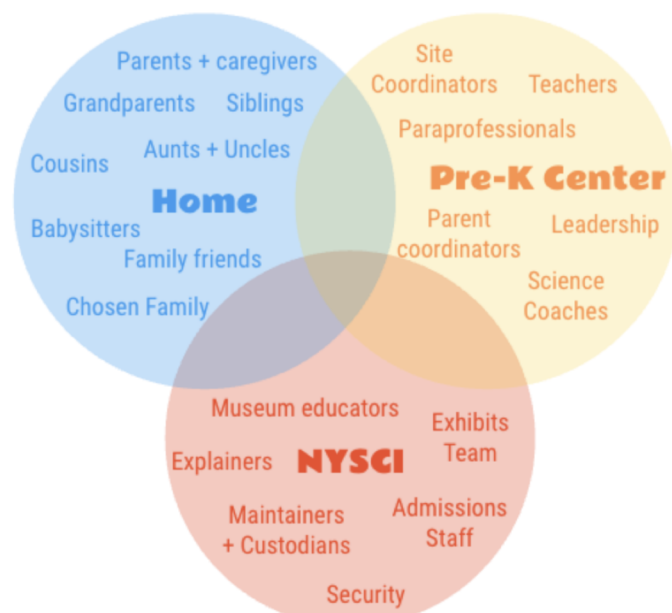
Personas created using interview themes & community-level data



Excerpts from Vision Document with shared goals for family engagement in early STEM learning

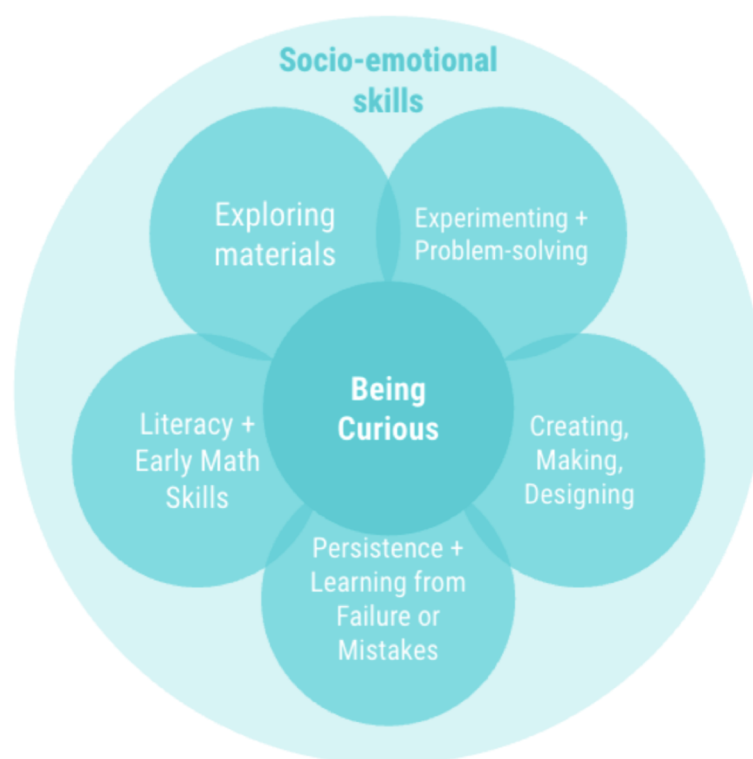
Our Partnership

NYSCI and Q369 (the Pre-K Center on the museum's campus) have a long-term partnership to support early STEAM learning. Our goal is to connect learning experiences that children have at school, at the museum, at home, and beyond – creating a STEAM learning ecosystem in our community.



Supporting Early STEAM learning

means helping children practice...



Supporting Family Engagement

means creating opportunities for families to...

